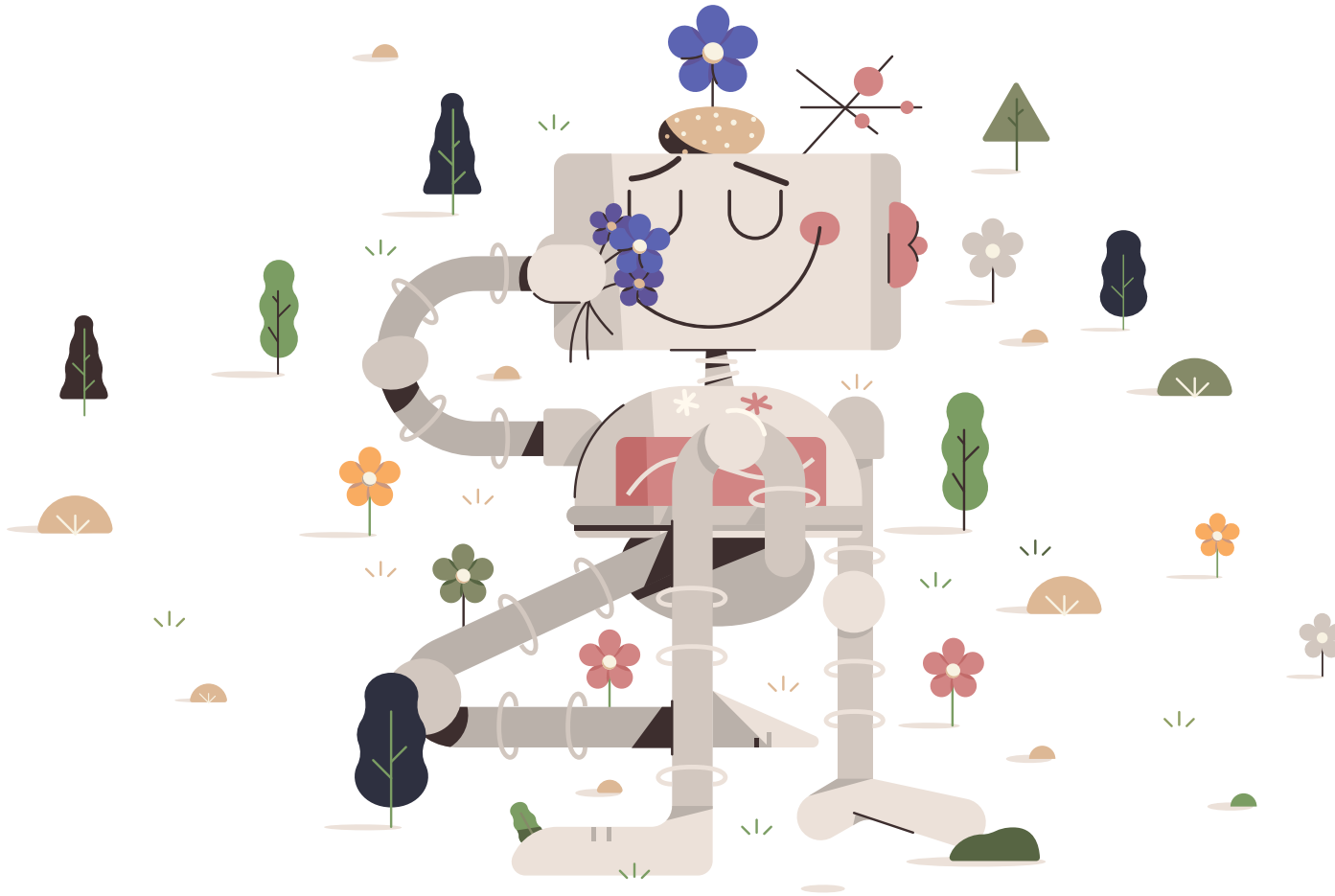


2022 Payroll Calendar

 Canada Edition



Simple payroll software built just for small businesses.
Backed by the world's friendliest team.



www.wagepoint.com

2022



Wagepoint
www.wagepoint.com

01 January

Wk	Su	M	Tu	W	Th	F	Sa
52							1
1	2	3	4	5	6	7	8
2	9	10	11	12	13	14	15
3	16	17	18	19	20	21	22
4	23	24	25	26	27	28	29
5	30	31					

02 February

Wk	Su	M	Tu	W	Th	F	Sa
5			1	2	3	4	5
6	6	7	8	9	10	11	12
7	13	14	15	16	17	18	19
8	20	21	22	23	24	25	26
9	27	28					

03 March

Wk	Su	M	Tu	W	Th	F	Sa
9			1	2	3	4	5
10	6	7	8	9	10	11	12
11	13	14	15	16	17	18	19
12	20	21	22	23	24	25	26
13	27	28	29	30	31		

04 April

Wk	Su	M	Tu	W	Th	F	Sa
13						1	2
14	3	4	5	6	7	8	9
15	10	11	12	13	14	15	16
16	17	18	19	20	21	22	23
17	24	25	26	27	28	29	30

05 May

Wk	Su	M	Tu	W	Th	F	Sa
18	1	2	3	4	5	6	7
19	8	9	10	11	12	13	14
20	15	16	17	18	19	20	21
21	22	23	24	25	26	27	28
22	29	30	31				

06 June

Wk	Su	M	Tu	W	Th	F	Sa
22				1	2	3	4
23	5	6	7	8	9	10	11
24	12	13	14	15	16	17	18
25	19	20	21	22	23	24	25
26	26	27	28	29	30		

07 July

Wk	Su	M	Tu	W	Th	F	Sa
26						1	2
27	3	4	5	6	7	8	9
28	10	11	12	13	14	15	16
29	17	18	19	20	21	22	23
30	24	25	26	27	28	29	30
31	31						

08 August

Wk	Su	M	Tu	W	Th	F	Sa
31		1	2	3	4	5	6
32	7	8	9	10	11	12	13
33	14	15	16	17	18	19	20
34	21	22	23	24	25	26	27
35	28	29	30	31			

09 September

Wk	Su	M	Tu	W	Th	F	Sa
35					1	2	3
36	4	5	6	7	8	9	10
37	11	12	13	14	15	16	17
38	18	19	20	21	22	23	24
39	25	26	27	28	29	30	

10 October

Wk	Su	M	Tu	W	Th	F	Sa
39							1
40	2	3	4	5	6	7	8
41	9	10	11	12	13	14	15
42	16	17	18	19	20	21	22
43	23	24	25	26	27	28	29
44	30	31					

11 November

Wk	Su	M	Tu	W	Th	F	Sa
44			1	2	3	4	5
45	6	7	8	9	10	11	12
46	13	14	15	16	17	18	19
47	20	21	22	23	24	25	26
48	27	28	29	30			

12 December

Wk	Su	M	Tu	W	Th	F	Sa
48					1	2	3
49	4	5	6	7	8	9	10
50	11	12	13	14	15	16	17
51	18	19	20	21	22	23	24
52	25	26	27	28	29	30	31

January 2022



Sunday	Monday	Tuesday	Wednesday	Thursday	Friday	Saturday
26	27	28	29	30	31	Payroll Deductions Online Calculator (PDOC) updated New Year's Day 1
2	 New Year's Day Observed 3	 Day After New Year's Day QC 4	5	6	7	8
9	 For payrolls processed on or after the 16th day of the previous month. 10	11	12	13	14	15
16	  17	18	19	20	21	22
23	24	 For payrolls processed on or before the 15th day of the month. 25	26	27	28	29
30	31	Key:  Some banks closed  Threshold 1 remitter payments due  Regular remitter payments due  All banks closed (For national holidays with bank closures, allow at least one extra business day for direct deposit.)  Quarterly tax payment  Quarterly remitter payments due				

February 2022



Sunday	Monday	Tuesday	Wednesday	Thursday	Friday	Saturday
30	31	1	Groundhog Day 2	3	4	5
6	7	8	9	10 ★ For payrolls processed on or after the 16th day of the previous month.	11	12
13	Valentine's Day 14	★ 15	16	17	18	19
20 Family Day AB, BC, NB, ON, SK Heritage Day NS Islander Day PE Louis Riel Day MB	21	22	23	24	25 ★ For payrolls processed on or before the 15th day of the month. Yukon Heritage Day YT	26
27 T4 and T4a and RL-1 information returns due	28	1	2	3	4	5

Key:



Some banks closed



Threshold 1 remitter payments due



Regular remitter payments due



All banks closed
(For national holidays with bank closures, allow at least one extra business day for direct deposit.)







Quarterly tax payment



Quarterly remitter payments due

March 2022



Sunday	Monday	Tuesday	Wednesday	Thursday	Friday	Saturday
27	28	1	2	3	4	5
6	7	8	9	10  For payrolls processed on or after the 16th day of the previous month.	11	12
13	14  St. Patrick's Day NL	15 	16	17 St. Patrick's Day (All except NL)	18	19
20	21	22	23	24	25  For payrolls processed on or before the 15th day of the month.	26
27	28	29	30	31	1	2

Key:



Some banks closed



Threshold 1 remitter payments due



Regular remitter payments due



All banks closed
(For national holidays with bank closures, allow at least one extra business day for direct deposit.)



Quarterly tax payment



Quarterly remitter payments due

April 2022



Sunday	Monday	Tuesday	Wednesday	Thursday	Friday	Saturday
27	28	29	30	31	1	2
3	4	5	6	7	8	9
10	 <p>For payrolls processed on or after the 16th day of the previous month.</p>	12	13	14	 Good Friday (all except QC)	16
Easter Sunday 17	    Easter Monday QC	19	20	21	22	23
24	 <p>For payrolls processed on or before the 15th day of the month.</p>	26	27	28	29	30

Key:



Some banks closed



Threshold 1 remitter payments due



Regular remitter payments due



All banks closed
(For national holidays with bank closures, allow at least one extra business day for direct deposit.)



Quarterly tax payment



Quarterly remitter payments due

May 2022



Sunday	Monday	Tuesday	Wednesday	Thursday	Friday	Saturday
1	2 Filing deadline: - Personal income tax - Sole proprietors and partnerships	3	4	5	6	7
8 Mother's Day	9	10 ★ For payrolls processed on or after the 16th day of the previous month.	11	12	13	14
15	16 ★	17	18	19	20	21
22	23 🏛️ Victoria Day AB, BC, MB, NB, NL, NT, NU, ON, SK, YK National Patriots' Day QC	24	25 ★ For payrolls processed on or before the 15th day of the month.	26	27	28
29	30	31	1	2	3	4

Key:



Some banks closed



Threshold 1 remitter
payments due



Regular remitter
payments due



All banks closed
(For national holidays with bank
closures, allow at least one extra
business day for direct deposit.)



Quarterly tax
payment



Quarterly remitter
payments due

June 2022



Sunday	Monday	Tuesday	Wednesday	Thursday	Friday	Saturday
29	30	31	1	2	3	4
5	6	7	8	9	10 ★ For payrolls processed on or after the 16th day of the previous month.	11
12	13	14	15 ★ 💵 Filing deadline: Self-employed income taxes	16	17	18
19 Father's Day	20	21 🏛️ National Indigenous Peoples Day NT, YT	22	23	24 🏛️ Fête nationale du Québec (St. Jean Baptiste Day) QC	25
26	27 ★ For payrolls processed on or before the 15th day of the month.	28	29	30	1	2

Key:



Some banks closed



Threshold 1 remitter payments due



Regular remitter payments due



All banks closed
(For national holidays with bank closures, allow at least one extra business day for direct deposit.)



Quarterly tax payment



Quarterly remitter payments due

July 2022



Sunday	Monday	Tuesday	Wednesday	Thursday	Friday	Saturday
26	27	28	29	30	 Payroll Deductions Online Calculator (PDOC) updated Canada Day 1	2
3	4	5	6	7	8	 Nunavut Day NU 9
10	 For payrolls processed on or after the 16th day of the previous month. Orangeman's Day NL 11	12	13	14	  15	16
17	18	19	20	21	22	23
24	 For payrolls processed on or before the 15th day of the month. 25	26	27	28	29	30

31

Key:



Some banks closed



Threshold 1 remitter payments due



Regular remitter payments due



All banks closed
 (For national holidays with bank closures, allow at least one extra business day for direct deposit.)



Quarterly tax payment



Quarterly remitter payments due

August 2022



Sunday	Monday	Tuesday	Wednesday	Thursday	Friday	Saturday	
31	 Civic/Provincial Holiday Terry Fox Day New Brunswick Day British Columbia Day Saskatchewan Day Heritage Day Natal Day	1	2	3	4	5	6
7	8	9	 For payrolls processed on or after the 16th day of the previous month.	10	11	12	13
14	  Discovery Day YT	15	16	17	18	19	20
21	22	23	24	 For payrolls processed on or before the 15th day of the month.	25	26	27
28	29	30	31	1	2	3	

Key:



Some banks closed



Threshold 1 remitter payments due



Regular remitter payments due



All banks closed
 (For national holidays with bank closures, allow at least one extra business day for direct deposit.)



Quarterly tax payment



Quarterly remitter payments due

September 2022



Sunday	Monday	Tuesday	Wednesday	Thursday	Friday	Saturday
28	29	30	31	1	2	3
4	 Labour Day	6	7	8	9	10
11	 For payrolls processed on or after the 16th day of the previous month.	13	14		16	17
18	19	20	21	22	23	24
25	 For payrolls processed on or before the 15th day of the month.	27	28	29	 National Day for Truth and Reconciliation	1

Key:



Some banks closed



Threshold 1 remitter payments due



Regular remitter payments due



All banks closed
(For national holidays with bank closures, allow at least one extra business day for direct deposit.)



Quarterly tax payment



Quarterly remitter payments due

October 2022



Sunday	Monday	Tuesday	Wednesday	Thursday	Friday	Saturday
25	26	27	28	29	30	1
2	3	4	5	6	7	8
9	 Thanksgiving Day 10	 For payrolls processed on or after the 16th day of the previous month. 11	12	13	14	15
16	 17	18	19	20	21	22
23	24	 For payrolls processed on or before the 15th day of the month. 25	26	27	28	29

Key:



Some banks closed



Threshold 1 remitter payments due



Regular remitter payments due



All banks closed
 (For national holidays with bank closures, allow at least one extra business day for direct deposit.)



Quarterly tax payment



Quarterly remitter payments due

30	Halloween 31
----	--------------

November 2022



Sunday	Monday	Tuesday	Wednesday	Thursday	Friday	Saturday
30	31	1	2	3	4	5
6	7	8	9	 <p>For payrolls processed on or after the 16th day of the previous month.</p>	 <p>Remembrance Day (All except ON, QC)</p>	10
13	14		15	16	17	18
20	21	22	23	24	 <p>For payrolls processed on or before the 15th day of the month.</p>	25
27	28	29	30	1	2	3

Key:



Some banks closed



Threshold 1 remitter payments due



Regular remitter payments due



All banks closed
(For national holidays with bank closures, allow at least one extra business day for direct deposit.)




Quarterly tax payment



Quarterly remitter payments due

December 2022



Sunday	Monday	Tuesday	Wednesday	Thursday	Friday	Saturday
27	28	29	30	1	2	3
4	5	6	7	8	9	10
11	 <p>For payrolls processed on or after the 16th day of the previous month.</p>	13	14		16	17
18	19	20	21	22	23	Christmas Eve 24
Christmas Day 25	 <p>Boxing Day Christmas Day Observed</p>	 <p>Boxing Day Observed* (All except AB, BC, QC)</p>	 <p>For payrolls processed on or before the 15th day of the month.</p>	29	30	New Year's Eve 31

www.wagepoint.com

*Note: Boxing Day is a statutory holiday in Ontario only, however banks will be closed in all provinces. Wagepoint will also be closed on this day.

Key:



Some banks closed



Threshold 1 remitter payments due



Regular remitter payments due



All banks closed
(For national holidays with bank closures, allow at least one extra business day for direct deposit.)



Quarterly tax payment



Quarterly remitter payments due